

MOD QW100



Light Efficiency:

36 Lumen/Watt

Light Quality:

CRI: 70.4

Color Temperature:

6899 K

Output: 1092 lm

Peak: 3701 cd

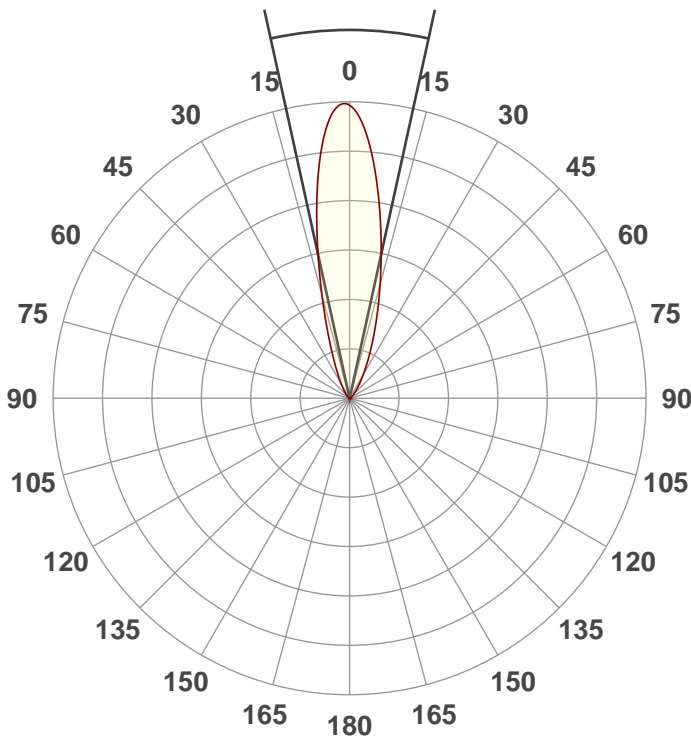
Power: 30.4 W

PF: 0.6



Beam Angle

24.8°



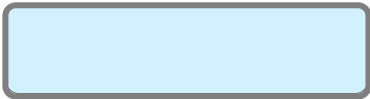
Test:

40Deg Full On

Date:

11/19/2018

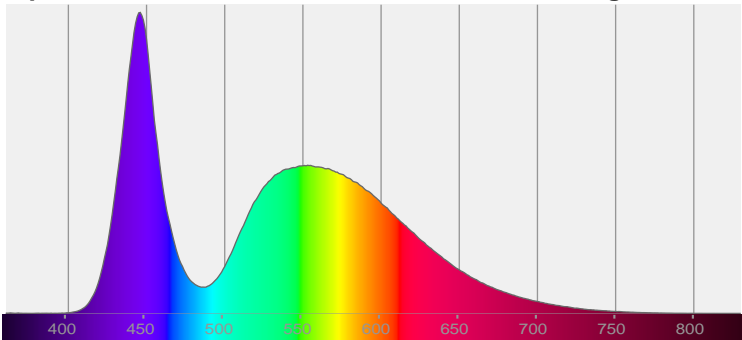
Note:



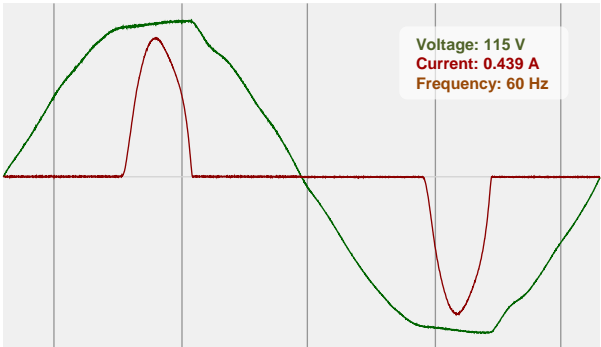
CIE 1931
x: 0.308
y: 0.315

Spectra

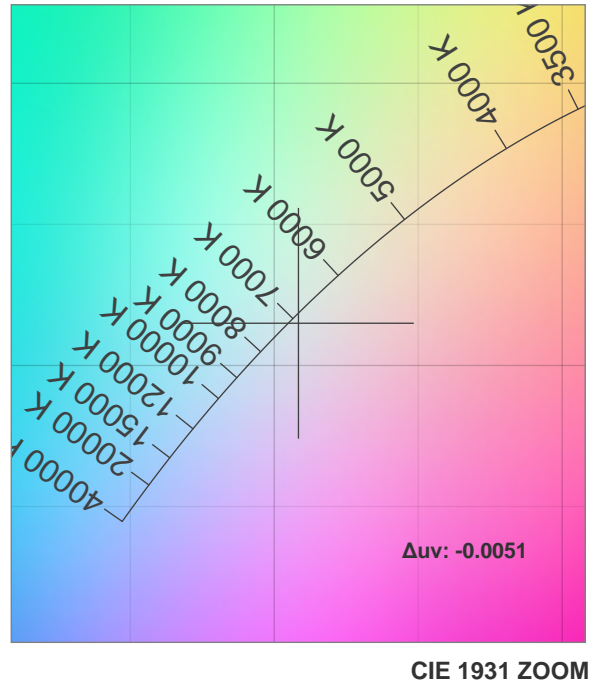
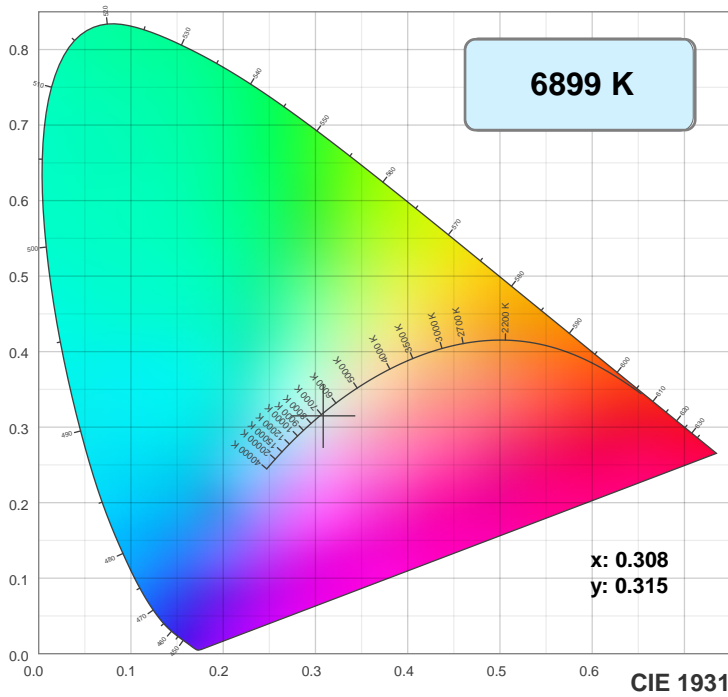
Dominant Wavelength: 360nm



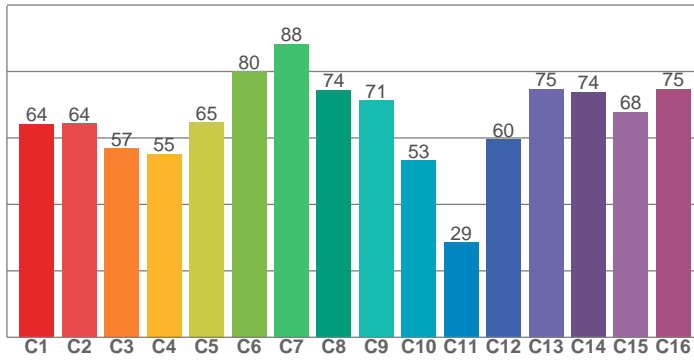
Power



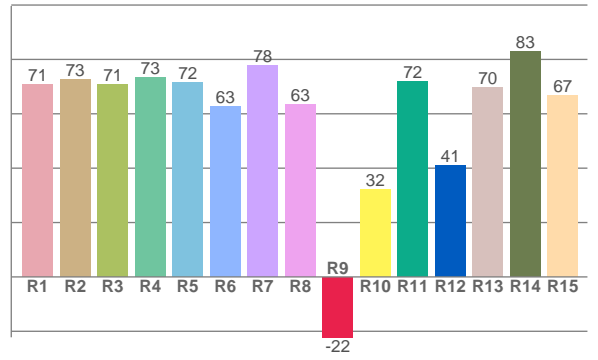
Color Details



TM30: 65.3



CRI: 70.4 (R1-R8)



CRI R values, only R1-R8 are used to calculate final CRI value

R1	R2	R3	R4	R5	R6	R7	R8	R9	R10	R11	R12	R13	R14	R15
70.8	72.7	70.7	73.4	71.7	62.8	77.7	63.5	-22.2	32.1	71.7	40.9	69.8	83.1	66.7

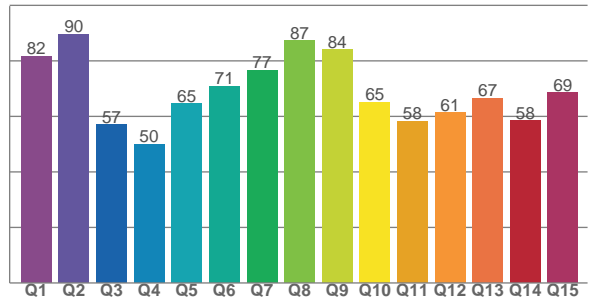
TM30 C values, 16 binned values out of total of 99 C values

C1	C2	C3	C4	C5	C6	C7	C8	C9	C10	C11	C12	C13	C14	C15	C16
64.2	64.3	56.9	55.1	64.7	80.0	88.3	74.4	71.3	53.3	28.6	59.5	74.8	73.8	67.9	74.8

CQS Q values

Q1	Q2	Q3	Q4	Q5	Q6	Q7	Q8	Q9	Q10	Q11	Q12	Q13	Q14	Q15
81.7	89.6	57.1	49.9	64.5	70.9	76.6	87.2	84.0	65.1	58.3	61.3	66.5	58.4	68.6

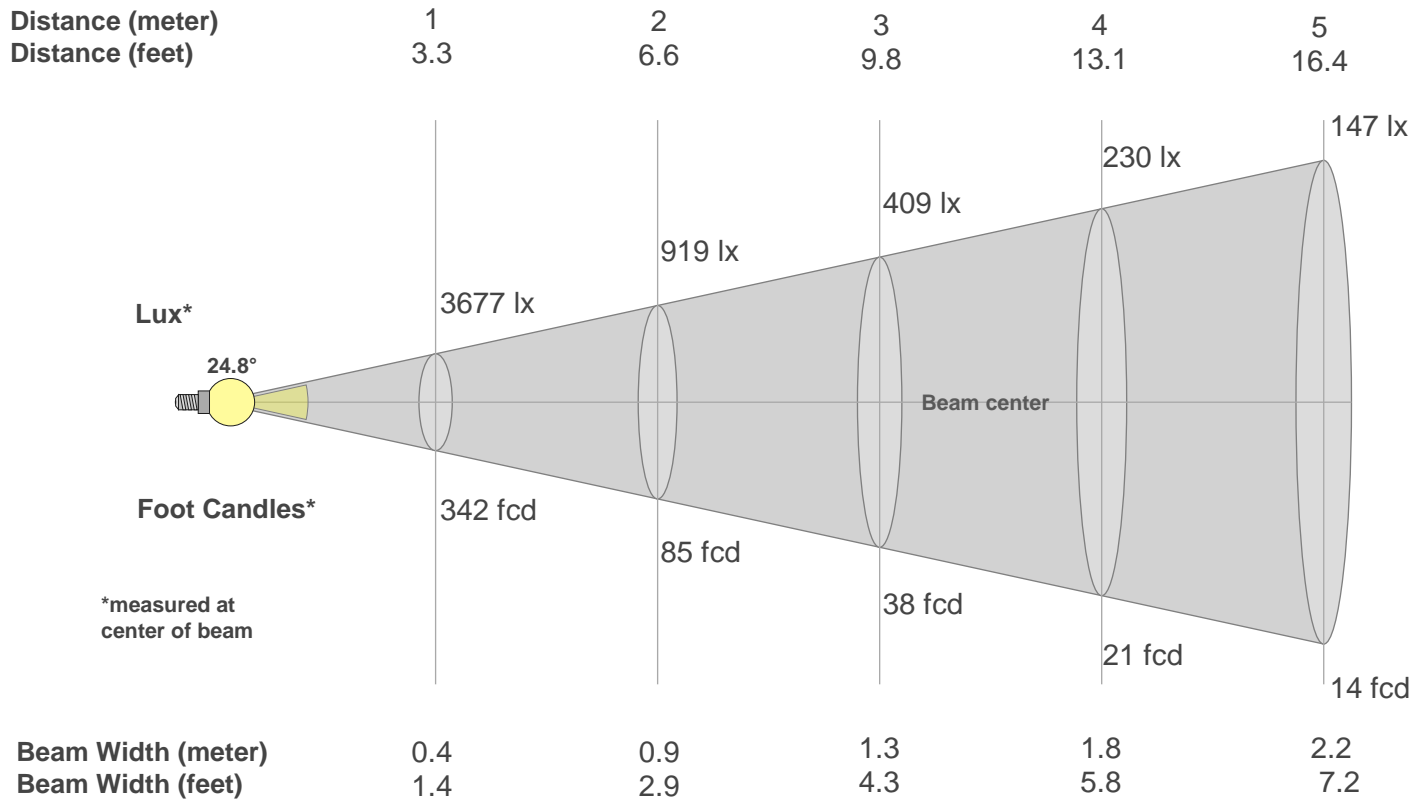
CQS: 67.2



Color Parameters

Color Temperature	Color Rendering Index	Red Component	Color Fidelity	Color Gamut	Color Quality Scale	Color Coordinate CIE 1931	Color Coordinate CIE 1931	Color Coordinate	Color Coordinate	Color Deviation from Black Body
CCT	CRI	CRI R9	TM30 Rf	TM30 Rg	CQS	x	y	u	v	Δuv
6899 K	70.4	-22.2	65.3	95.0	67.2	0.308	0.315	0.200	0.307	-0.0051

Beam Details



Beam Intensities from 1-20m

m	1	2	3	4	5	6	7	8	9	10	11	12	13	14	15	16	17	18	19	20
ft	3.3	6.6	9.8	13.1	16.4	19.7	23	26.2	29.5	32.8	36.1	39.4	42.7	45.9	49.2	52.5	55.8	59.1	62.3	65.6
lx	3677	919	409	230	147	102	75	57	45	37	30	26	22	19	16	14	13	11	10	9
fcd	341.6	85.4	38	21.4	13.7	9.5	7	5.3	4.2	3.4	2.8	2.4	2	1.7	1.5	1.3	1.2	1.1	0.9	0.9

Intensities in 0° C-plane

0°	2°	4°	6°	8°	10°	12°	14°	16°	18°	20°	22°	24°	26°	28°	30°	32°	34°	36°	38°
3677	3682	3528	3230	2833	2381	1932	1523	1181	907	700	542	424	335	266	214	173	141	115	95
100%	100%	96%	88%	77%	65%	53%	41%	32%	25%	19%	15%	12%	9%	7%	6%	5%	4%	3%	3%

Intensities in 90° C-plane

0°	2°	4°	6°	8°	10°	12°	14°	16°	18°	20°	22°	24°	26°	28°	30°	32°	34°	36°	38°
3677	3682	3528	3230	2833	2381	1932	1523	1181	907	700	542	424	335	266	214	173	141	115	95
100%	100%	96%	88%	77%	65%	53%	41%	32%	25%	19%	15%	12%	9%	7%	6%	5%	4%	3%	3%

Intensities in 180° C-plane

0°	2°	4°	6°	8°	10°	12°	14°	16°	18°	20°	22°	24°	26°	28°	30°	32°	34°	36°	38°
3677	3531	3269	2941	2585	2235	1908	1614	1355	1129	935	771	632	516	420	342	278	226	185	151
100%	96%	89%	80%	70%	61%	52%	44%	37%	31%	25%	21%	17%	14%	11%	9%	8%	6%	5%	4%

Intensities in 270° C-plane

0°	2°	4°	6°	8°	10°	12°	14°	16°	18°	20°	22°	24°	26°	28°	30°	32°	34°	36°	38°
3677	3531	3269	2941	2585	2235	1908	1614	1355	1129	935	771	632	516	420	342	278	226	185	151
100%	96%	89%	80%	70%	61%	52%	44%	37%	31%	25%	21%	17%	14%	11%	9%	8%	6%	5%	4%

Beam Angle 50%	Field Angle 10%	Cutoff Angle 2,5%	Intensity Ratio in 120° Cone	Intensity Ratio in 90° Cone
24.8°	54.4°	81.4°	98.8%	94.4%